

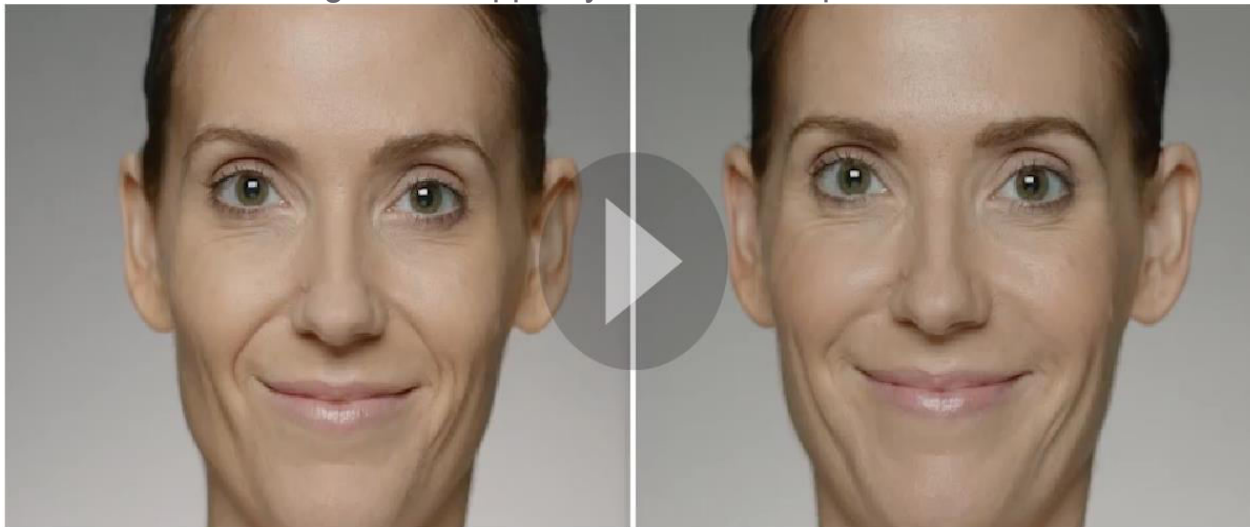
NATURAL EXPRESSION IN MOTION

NEW

Restylane REFYNE

Restylane DEFYNE

Two new next-generation HA dermal fillers
designed to support your natural expressions.¹



Actual patient. Results after two weeks unretouched. Individual results may vary.

1.0 mL *Restylane Defyne* to nasolabial folds, 1.0 mL *Restylane Defyne* to marionette lines.

30 Days after treatment:



of those treated with **Restylane® Refyne** said they looked natural when smiling and relaxed



of those treated with **Restylane® Refyne** said they felt attractive and looked younger than their actual age



of those treated with **Restylane® Defyne** said they looked natural when smiling and relaxed

Once treated, your look should last up to 12 months. ^{1, 2, 3, †}

† In a Phase III comparator trial, 59% of 170 *Restylane Refyne* subjects and 65% of 170 *Juvaderm Ultra* subjects maintained their results after 12 months

* In the Patient Experience Study, 20 subjects reported their treatment satisfaction, as well as how long it took them to feel comfortable returning to their normal activities

Ask me about these new products today.

CLICK HERE
TO WATCH PATIENTS SHARING THEIR TREATMENT EXPERIENCES.

1. Data on file, MA-30083 Clinical Study Report, Fort Worth, TX: Galderma Laboratories, L.P., 2016
2. *Restylane Refyne* Instructions for Use, Fort Worth, TX: Galderma Laboratories, L.P., 2016
3. *Restylane Defyne* Instructions for Use, Fort Worth, TX: Galderma Laboratories, L.P., 2016

Important Safety Information

The *Restylane* family of products includes *Restylane*®, *Restylane-L*®, *Restylane® Lyft with Lidocaine*, *Restylane® Silk*, *Restylane® Refyne*, and *Restylane® Defyne*.

APPROVED USES

Restylane® and *Restylane-L*® are for mid-to-deep injection into the facial tissue for the correction of moderate to severe facial wrinkles and folds, such as nasolabial folds. *Restylane*® and *Restylane-L*® are also indicated for injection into the lips in patients over the age of 21.

Restylane® Lyft with Lidocaine is for deep implantation into the facial tissue for the correction of moderate to severe facial wrinkles and folds, such as nasolabial folds and for cheek augmentation and for the correction of age-related midface contour deficiencies in patients over the age of 21.

Restylane® Silk is for lip augmentation and for correction of perioral wrinkles in patients over the age of 21.

Restylane® Refyne is for mid-to-deep injection into the facial tissue for the correction of moderate to severe facial wrinkles and folds, such as nasolabial folds, in patients over the age of 21.

Restylane® Defyne is for mid-to-deep injection into the facial tissue for the correction of moderate to severe deep facial wrinkles and

- Tell your doctor if you have any history of scarring, particularly thick and stiff scars, or any pigmentation (skin color) disorders. These side effects can occur with hyaluronic acid fillers in general.
- Tell your doctor if you are planning other laser treatments or a chemical peel, as there is a possible risk of inflammation at the treatment site if these procedures are performed after treatment
- Patients who experience skin injury near the site of injection with these products may be at a higher risk for side effects
- Tell your doctor if you are on any medications to decrease your body's immune response (immunosuppressive therapy). Using these medications may increase your risk of bruising or bleeding at the gel injection site.
- Tell your doctor if you are using any "blood thinners" such as aspirin, warfarin, or any other medications that affect bleeding. Using these medications may increase your risk of bruising or bleeding at the gel injection site.
- The use of these products on gel injection sites with skin

folds, such as nasolabial folds, in patients over the age of 21.

Are there any reasons why I should not use products within the Restylane® family? (Contraindications)

To ensure a safe procedure, your doctor will talk to you about your medical history to determine if you are an appropriate candidate for treatment. You should not use products within the *Restylane* family if:

- You have severe allergies with a history of severe reactions (anaphylaxis)
- You are allergic to lidocaine or to any of the gram-positive bacterial proteins used to make hyaluronic acid
- You are prone to bleeding or have been diagnosed with a bleeding disorder

Are there other precautions that I should discuss with my doctor?

- Tell your doctor if you are breastfeeding, pregnant, or trying to become pregnant. The safety of these products for use during pregnancy, or in women who are breastfeeding, has not been studied
- *Restylane*, *Restylane-L*, *Restylane® Lyft with Lidocaine*, *Restylane Refyne* and *Restylane Defyne* are intended to treat facial wrinkles and folds, such as nasolabial folds. *Restylane* and *Restylane-L* are also intended for lip enhancement. Treatments in other areas of the face have not been evaluated in clinical studies.
- The safety and effectiveness of *Restylane® Silk* for areas other than the lips and perioral area have not been evaluated in clinical studies.

sores, pimples, rashes, hives, cysts, or infections should be postponed until healing is complete. Use of product in these areas could delay healing or make your skin problems worse.

What are the possible side effects?

The most commonly observed side effects are swelling, redness, pain, bruising, headache, tenderness, lump formation, and itching at the injection site. These are typically mild in severity and typically resolve in less than 7 days in nasolabial folds and less than 14 days in lips. Serious but rare side effects include delayed onset infections, recurrence of herpetic eruptions, and superficial necrosis at the injection site.

One of the risks with using this product is unintentional injection into a blood vessel. The chances of this happening are very small, but if it does happen, the complications can be serious, and may be permanent. These complications, which have been reported for facial injections, can include vision abnormalities, blindness, stroke, temporary scabs, or permanent scarring of the skin.

As with all skin injection procedures, there is a risk of infection.

To report a side effect with any of the *Restylane* products, please call Galderma Laboratories, L.P. at 1-855-425-8722.

The *Restylane* family of products is available only through a licensed practitioner. Complete Instructions for Use are available at www.RestylaneUSA.com.



© 2016 Galderma Laboratories, L.P. 14501 N. Freeway, Fort Worth, TX 76177.
All trademarks are the property of their respective owners. MP - REF - 00011e 01/17